

ALL ITEMS ARE NON-TOXIC. DO NOT EAT.



Scan QR Code below to access our video guide!

Or use this link: <http://bit.ly/aug23TnM>



Materials

- House-shaped wood cutout
- House-shaped wood frame cutout
- Triangular wood piece (stand)
- Wood letters (H, M, & E)
- Patterned cardstock
- Cardstock flower shape and flower center
- 24" piece of twine
- Button
- Glue & 2 square foam stickers
- Black acrylic paint
- Paintbrush
- Sandpaper
- *Scissors or X-acto knife (not included)

Home Plaque

Skill Level: Beginner

CAUTION: The wood pieces were cut using our laser cutter in the Makerspace and may have burnt edges. Wipe edges of laser cut pieces with a rag or paper towel to remove some of the soot before beginning this project. Be careful when handling the paper pieces to keep them free from smudges caused by the laser cut parts.

Instructions

1. Using the paintbrush, paint the front sides of the wooden letters (H, M, & E) with black acrylic paint and set aside to dry. Rinse and dry the paintbrush.
2. Use the clean paintbrush to apply a coat of glue to one side of the house-shaped wood cutout. Work quickly to apply the glue; the wood will soak it up.
3. Immediately place the patterned cardstock directly on the glue and smooth down. Set aside to dry.
4. While parts of the project are drying, use the piece of sandpaper to clean off any burn marks from one side of the wood frame cutout to make it look nice and neat.

Optional: Use the sandpaper to sand the front and back of the small triangular piece that will be attached to the back of the project later.

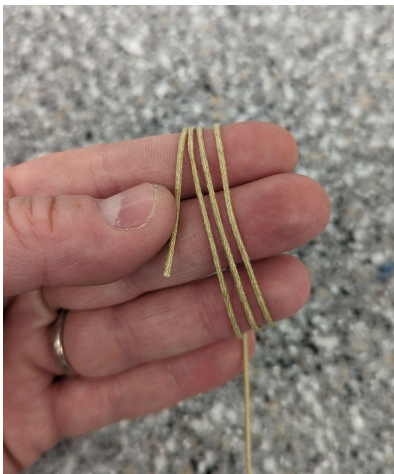
ALL ITEMS ARE NON-TOXIC. DO NOT EAT.

ALL ITEMS ARE NON-TOXIC. DO NOT EAT.

5. Return to the house-shaped wood piece and use scissors or an X-acto knife to trim the excess paper from around the edge of the piece.
6. Add glue to the unsanded side of the wood frame piece and apply to the side of the house-shaped cutout with the patterned paper to create a frame around the edge. Allow pieces to dry.
7. Apply glue to the backs of the letters and apply as seen in the picture. Leave a space for the flower that will be the “O” of the word “HOME”.
8. Apply the flower center to the flower shape by adding the small foam square to the back of the cardstock flower center and applying it to the center of the cardstock flower shape. This will give the flower some dimension.

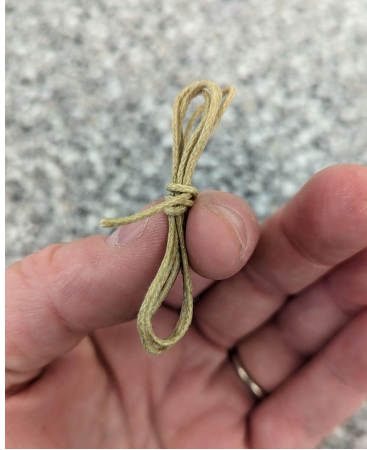
*There are 2 foam squares included in this kit. The foam pieces are sticky on both sides, Simply remove the white backing to reveal the adhesive on either side.

9. Now that the flower center is attached, apply the larger foam square to the back of the flower and apply to the project to complete the word “HOME”.
10. Add the twine bow by wrapping the twine around your fingers several times. Remove from your fingers and, keeping the shape of the bow, wrap the excess twine around the middle of the bow. Tuck under one of the loops to secure. Trim the excess twine. Glue the twine bow to the top of the frame.



ALL ITEMS ARE NON-TOXIC. DO NOT EAT.

ALL ITEMS ARE NON-TOXIC. DO NOT EAT.



11. Use the glue to add the button on top of the twine bow. Allow the bow and button to dry.
12. Lastly, glue the triangular wood piece to the bottom center of the project to help it stand up.

13. *Optional:



ALL ITEMS ARE NON-TOXIC. DO NOT EAT.