

ALL ITEMS ARE NON-TOXIC. DO NOT EAT.



Flower Garland



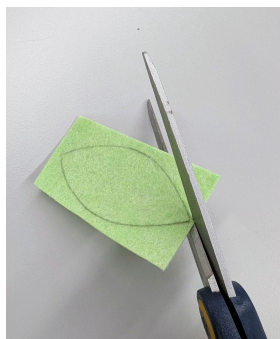
Materials:

- 7 wooden beads
- 6 wooden flowers
- 1 piece of cord (95 inches long)
- Acrylic paint (3 colors)
- 1 paint brush
- 1 piece of felt
- 1 leaf pattern
- *Glue (not included)

NOTE: Wooden beads and cord may differ from picture.

Instructions:

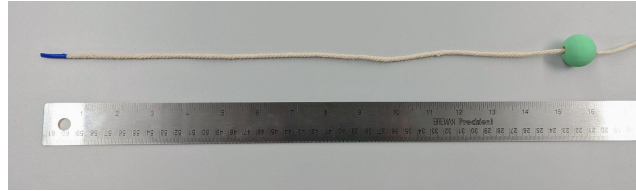
1. Using the paintbrush, paint the wooden flowers any colors you like.
2. Paint the wooden beads if you want or leave them just the way they are.
3. Let all your pieces dry.
4. While your flowers are drying, use the leaf pattern to trace 9 leaves on the piece of felt and then cut them out.



ALL ITEMS ARE NON-TOXIC. DO NOT EAT.



5. Start building your garland by threading a bead on the cord and stopping at 15 inches from the end.



6. Make a knot before the bead and after the bead to prevent the bead from moving.



7. Now thread the cord through the open spaces on the flower going over and then under. Place the flower close to the bead leaving about 2.5 inches after the bead.



8. Make another knot on the cord 2.5 inches after the flower.
9. Thread another bead on the cord again and add another knot after the bead.



10. Keep repeating the same process until you use all your flowers and beads.
11. Attach the leaves to the garland by adding some glue to the back of the flower and then attaching your leaves. Let dry.
12. Make a loop on both ends of the garland and then a knot so you are able to hang it.
13. Your flower garland is ready to be displayed.

